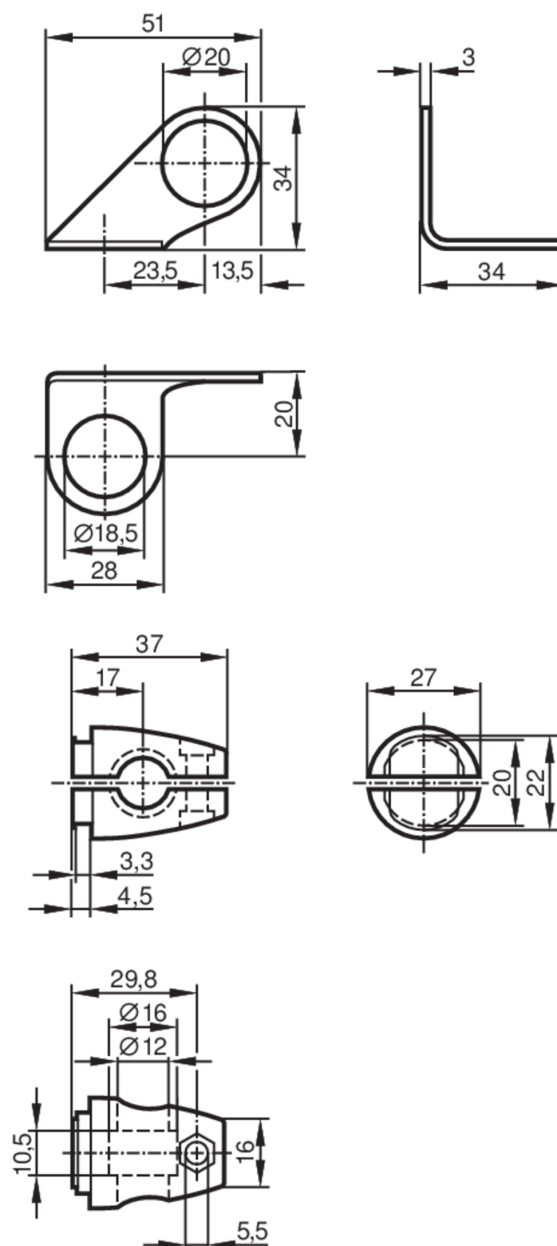


Mounting set for position sensors

SYSTEM COMPONENT M18 BOLT



| Application | |
|------------------|---|
| Design | clamp mounting |
| Mechanical data | |
| Weight [g] | 187.5 |
| Type of mounting | free-standing; (M10) |
| Dimensions [mm] | $\varnothing 18.5$ |
| Materials | fixture: stainless steel (1.4571/316Ti); Clamp: stainless steel (1.4408) |
| Accessories | |
| Items supplied | head cap screw: 1 x M10 x 55 |
| Remarks | |
| Pack quantity | 1 pcs. |